

Information Brief

Scents of the Holidays



The scents of the holiday season are often associated with specific chemicals and compounds found in natural sources. Here's a breakdown of the chemistry behind some common holiday scents:

Cinnamon

Cinnamaldehyde: the primary compound responsible for the warm and spice aroma of cinnamon.

Eugenol: contributes to the sweet and spicy notes in cinnamon.

Peppermint

Menthol: the dominant compound that gives peppermint its cooling and refreshing scent.

Menthone: another compound adding to the overall minty fragrance.

Pine (Evergreen)

Pinene (alpha and beta): terpenes responsible for the fresh and piney scents of evergreen trees.

Limonene: another terpene adding citrusy and uplifting notes to pine scents.

Nutmeg

Myristicin: the primary compound contributing to the sweet and nutty aroma of nutmeg.

Elemicin: adds additional spicy and warm notes.

Gingerbread

Gingerol: provides the warm and spicy scent associated with ginger.

Zingiberene: another compound contributing to the overall ginger aroma.

Frankincense

α -Pinene: a terpene that contributes to the woody and resinous scent of frankincense.

Limonene: adds citrusy and uplifting notes.

Bayberry

Myrcene: a terpene that adds an earthy and slightly sweet aroma to bayberry.

Linalool: Contributes to floral and spicy notes.

Vanilla

Vanillin: the main compound responsible for the sweet, creamy, and comforting scent of vanilla.

Myrrh

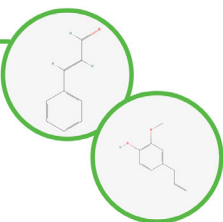
Sesquiterpenes: complex aromatic compounds that contribute to the smoky and woody scent of myrrh.

Clove

Eugenol: the main compound in clove responsible for its strong, spicy and sweet fragrance.

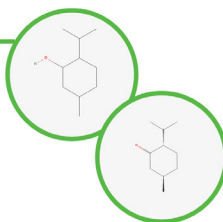
Cinnamon

Compounds:
Cinnamaldehyde
and Eugenol



Peppermint

Compounds:
Menthol
and Menthone



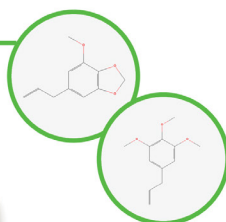
Pine (Evergreen)

Compounds:
Pinene (alpha & beta)
and Limonene



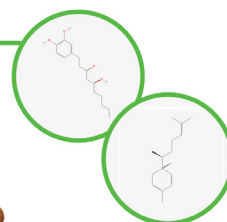
Nutmeg

Compounds:
Myristicin
and Elemicin



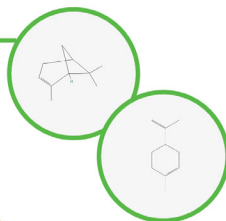
Gingerbread

Compounds:
Gingerol and
Zingiberene



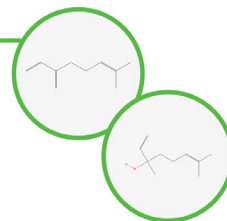
Frankincense

Compounds:
α-Pinene and
Limonene



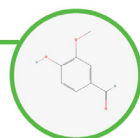
Bayberry

Compounds:
Myrcene
and Linalool



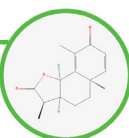
Vanilla

Compound:
Vanillin



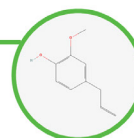
Myrrh

Compound:
Sesquiterpenes



Clove

Compound:
Eugenol



These scents are often created using essential oils extracted from plants, spices, and resins. The combination of these chemical compounds not only provides the distinctive holiday fragrances but also contributes to the emotional and nostalgic associations we have with these scents during the festive season.

USA:
+1.800.323.4340
+1.847.549.7600

Canada: +1.800.363.5900
China: +86.21.5109.9909
France: +33 (0) 1486 37800
Germany: +49 (0) 9377 92030

India: +1.800.266.1244
Italy: +39 (0) 2 84349215
UK: +44 (0) 1480.272279
All other countries: +1.847.549.7600

Cole-Parmer®
coleparmer.com